

DEPARTEMENT des LANDES
COMMUNE de BOUGUE

LOTISSEMENT DES ARÈNES

BORDEREAU DES PIECES

1- PIECE OBLIGATOIRE

PA4. Plan de Composition d'Ensemble
du Projet côté en trois dimensions
Echelle 1/500

Modifications

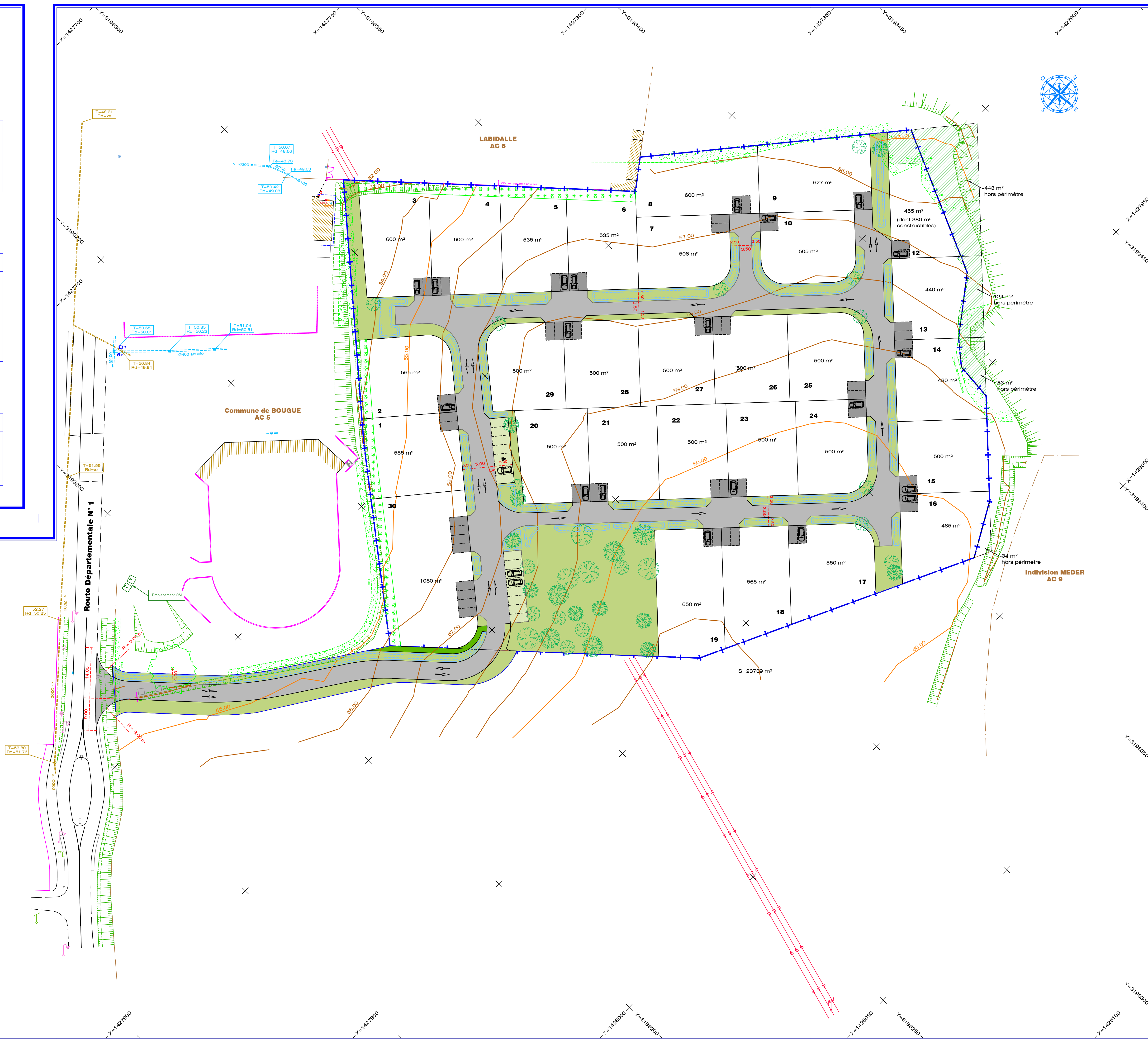
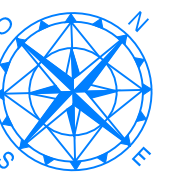
Clrchitectes
Claret + Lebecq
05 59 23 96 97
architectes@claret-lebecq.archi
24 - BOULEVARD MARCEL
DASSAULT 44200 BIARRITZ
SIRET 378164867 00053

Dossier N° 200509

21/12/2021

Etabli par la SCP BERLON-DUPUY-GAUZERE,
Géomètres Experts D.P.L.G.,
1485 Rue de la Ferme de Carboué
42000 MONT-de-MARSAN
Tél : 05.58.75.08.35
Fax : 05.58.75.56.59
E-mail : clement.berlon@bemoje.fr

Atelier d'Architecture CLARET LEBEQ
Architectes D.P.L.G.
24 Boulevard Marcel Dassault
64200 BIARRITZ
Tél : 05.59.23.96.97
E-mail : denis@claret-lebecq.archi



- LEGENDE :**
- Périmètre du Lotissement.
 - Voie en enrobé
 - Parkings visiteurs enherbés avec structure alvéolaire
 - Parking de midi
 - Espaces verts enherbés
 - Hales plantées par le lotisseur
 - Sente piétonne enherbée
 - Zone Natura 2000 - Zone inconstructible

Y=3193100
X=1427150
Y=3193150
X=1427150
Y=3193200
X=1427150
Y=3193250
X=1427150
Y=3193300
X=1427150
Y=3193350
X=1427150
Y=3193400
X=1427150
Y=3193450
X=1427150
Y=3193500
X=1427150
Y=3193550
X=1427150
Y=3193600
X=1427150
Y=3193650
X=1427150
Y=3193700
X=1427150
Y=3193750
X=1427150
Y=3193800
X=1427150
Y=3193850
X=1427150
Y=3193900
X=1427150
Y=3193950
X=1427150
Y=3194000
X=1427150
Y=3194050
X=1427150
Y=3194100
X=1427150
Y=3194150
X=1427150
Y=3194200
X=1427150
Y=3194250
X=1427150
Y=3194300
X=1427150
Y=3194350
X=1427150
Y=3194400
X=1427150
Y=3194450
X=1427150
Y=3194500
X=1427150
Y=3194550
X=1427150
Y=3194600
X=1427150
Y=3194650
X=1427150
Y=3194700
X=1427150
Y=3194750
X=1427150
Y=3194800
X=1427150
Y=3194850
X=1427150
Y=3194900
X=1427150
Y=3194950
X=1427150
Y=3195000
X=1427150
Y=3195050
X=1427150
Y=3195100
X=1427150
Y=3195150
X=1427150
Y=3195200
X=1427150
Y=3195250
X=1427150
Y=3195300
X=1427150
Y=3195350
X=1427150
Y=3195400
X=1427150
Y=3195450
X=1427150
Y=3195500
X=1427150
Y=3195550
X=1427150
Y=3195600
X=1427150
Y=3195650
X=1427150
Y=3195700
X=1427150
Y=3195750
X=1427150
Y=3195800
X=1427150
Y=3195850
X=1427150
Y=3195900
X=1427150
Y=3195950
X=1427150
Y=3196000
X=1427150
Y=3196050
X=1427150
Y=3196100
X=1427150
Y=3196150
X=1427150
Y=3196200
X=1427150
Y=3196250
X=1427150
Y=3196300
X=1427150
Y=3196350
X=1427150
Y=3196400
X=1427150
Y=3196450
X=1427150
Y=3196500
X=1427150
Y=3196550
X=1427150
Y=3196600
X=1427150
Y=3196650
X=1427150
Y=3196700
X=1427150
Y=3196750
X=1427150
Y=3196800
X=1427150
Y=3196850
X=1427150
Y=3196900
X=1427150
Y=3196950
X=1427150
Y=3197000
X=1427150
Y=3197050
X=1427150
Y=3197100
X=1427150
Y=3197150
X=1427150
Y=3197200
X=1427150
Y=3197250
X=1427150
Y=3197300
X=1427150
Y=3197350
X=1427150
Y=3197400
X=1427150
Y=3197450
X=1427150
Y=3197500
X=1427150
Y=3197550
X=1427150
Y=3197600
X=1427150
Y=3197650
X=1427150
Y=3197700
X=1427150
Y=3197750
X=1427150
Y=3197800
X=1427150
Y=3197850
X=1427150
Y=3197900
X=1427150
Y=3197950
X=1427150
Y=3198000
X=1427150
Y=3198050
X=1427150
Y=3198100
X=1427150
Y=3198150
X=1427150
Y=3198200
X=1427150
Y=3198250
X=1427150
Y=3198300
X=1427150
Y=3198350
X=1427150
Y=3198400
X=1427150
Y=3198450
X=1427150
Y=3198500
X=1427150
Y=3198550
X=1427150
Y=3198600
X=1427150
Y=3198650
X=1427150
Y=3198700
X=1427150
Y=3198750
X=1427150
Y=3198800
X=1427150
Y=3198850
X=1427150
Y=3198900
X=1427150
Y=3198950
X=1427150
Y=3199000
X=1427150
Y=3199050
X=1427150
Y=3199100
X=1427150
Y=3199150
X=1427150
Y=3199200
X=1427150
Y=3199250
X=1427150
Y=3199300
X=1427150
Y=3199350
X=1427150
Y=3199400
X=1427150
Y=3199450
X=1427150
Y=3199500
X=1427150
Y=3199550
X=1427150
Y=3199600
X=1427150
Y=3199650
X=1427150
Y=3199700
X=1427150
Y=3199750
X=1427150
Y=3199800
X=1427150
Y=3199850
X=1427150
Y=3199900
X=1427150
Y=3199950
X=1427150
Y=3200000